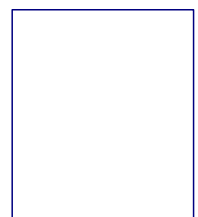
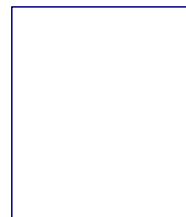
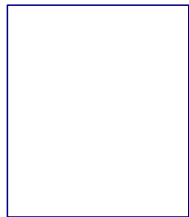


# Les Variétés Constantes du 140 Type IA

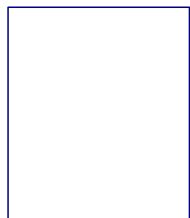
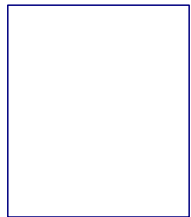
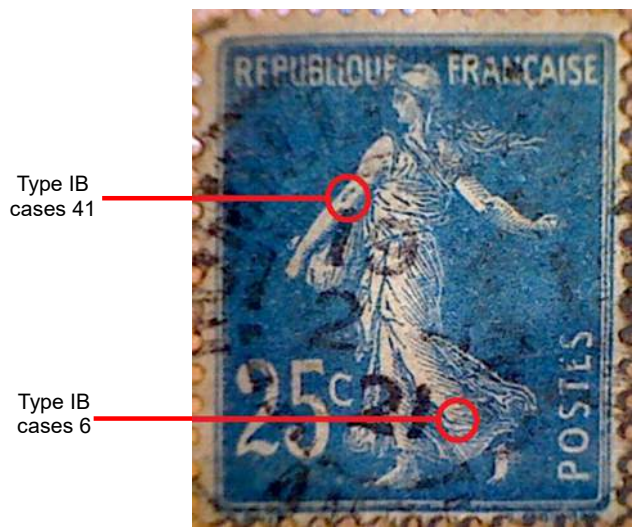
Type IA  
cases 41, 91, 141

Type IA  
« à éclipse »

Type IA  
cases 6, 56, 106



Les Variétés Constantes du 140 Type IB



De par la rareté du type IB, les constantes des cases 6 et 41 sur ce timbre sont vraiment très peu courantes sur timbres oblitérés.

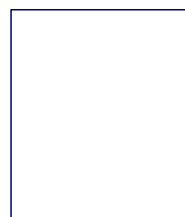
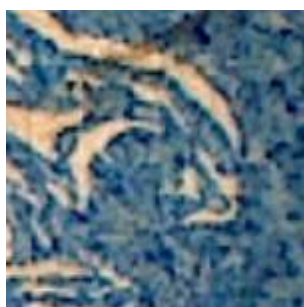
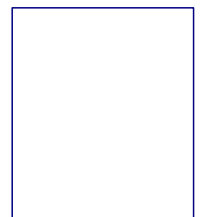
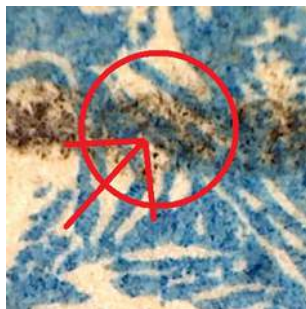
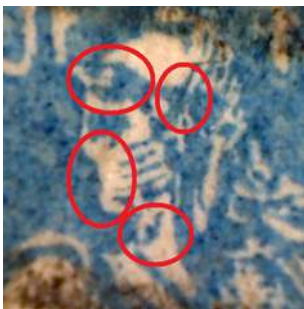
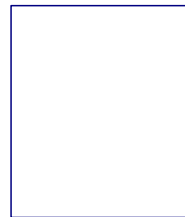
# Les Variétés Constantes du 140 Type III B



Type III B  
cases 39, 89

Type III B  
cases 40, 90

Type III B  
cases 30, 80



Les Variétés Constantes du 140 Type IV



Type IV  
cases 4 et 5

Type IV  
case 15

Type IV  
case 11

